



FHO3100 OTDR

Quick Guide

*Image for reference only



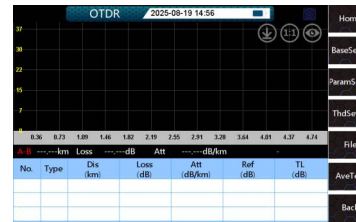
1. OTDR module

1.1 Test Setup

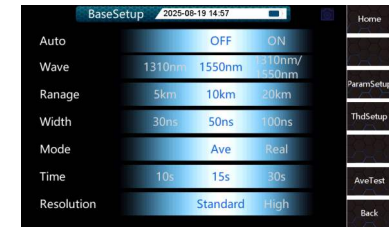
Press **【OTDR】** to enter **【OTDR】** test menu

Press **BaseSetup** to set the test parameter before fiber testing.

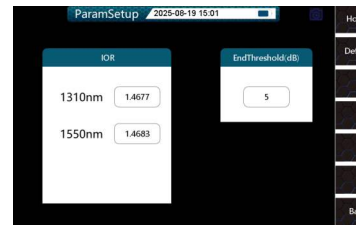
Press **ParamSetup** to set the fiber IOR value for different wavelength and set the fiber end threshold.



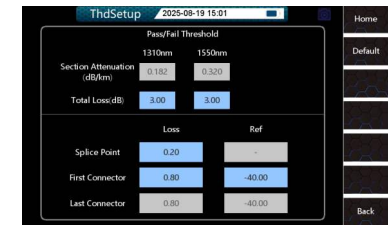
OTDR menu



BaseSetup



ParamSetup



Theshold Setup

Interface description



ON/OFF button
Long press to power on/off flashlight
Long press to turn on/off OTDR

Home Button
Short press to back to home menu
Long press to turn on/off flashlight



Battery cover

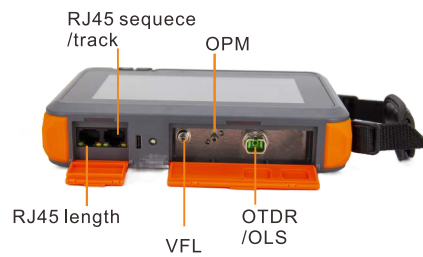
Support frame

Hand strap



Flashlight

Type-C port



RJ45 sequene /track

OPM

RJ45 length

VFL

OTDR /OLS

Test Setting	Description
Auto	Auto or Manual
Test Wave	Manual mode: User can modify "test range" and "pulse width" by their own
Test Range	1310nm, 1550nm, 1310nm/1550nm, 1625nm is optional
Pulse Width	500m~120km
Test Mode	3ns~20us
Test time	Average test: According to the set time, test the fiber link and obtain the results by averaging the samples.
Resolution	Realtime test:OTDR continuously emits light pulses to detect the fiber link
	5s-180s
	High resolution will have more sample points

1.2 OTDR test result

The test results include test trace and event lists.

The marker A and B can be moved to view the fiber information between AB.

The trace can be zoom in/out and moved through the touch screen operation.



Test Setting	Description
	Save the test file as sor format
	1:1 restore the OTDR trace
	Hide the OTDR marker A/B and thumbnail

2. FLM (Fiber link map) module

Press **【FLM】** to enter **【Fiber link map】** test menu

FLM: No need for complex settings, display fiber optic link test results in a graphical manner. If the test result exceeds the set threshold, the event will be marked in red.



4

3.OPM module

Press **【OPM】** to enter **【Optical Power Meter】** test menu

Click on the wavelength to change calibrated wavelengths.

Click dBm to switch display unit dBm/dB/mw

【Set REF】 Set the current optical power vaule as reference value

【Clear REF】 Clear the current reference value



10G PON selective OPM(Optional)

5

4.VFL and OLS module

VFL(Visual fault locator) support CW/1Hz/2Hz flashing working mode.

OLS(Optical laser source) support CW/270Hz/1kHz/2kHz working mode.



VFL interface



OLS interface

5.OLTS module

Press **【OLTS】** to enter **[Optical Loss Test set]** test menu

In **【OLTS】** mode, connect the OLS and OPM port together, and two functions can work together to check the loss of fiber link and fiber component.



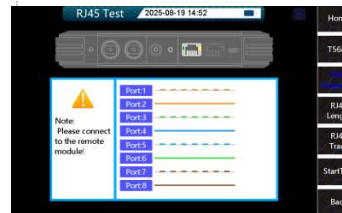
6

6.RJ45 Test

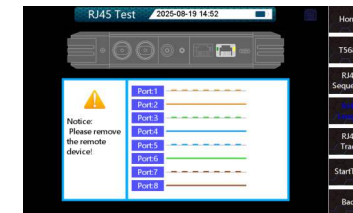
In RJ45 testing, it includes RJ45 line sequence, length, and track function.

Please pay attention to the selection of the top RJ45 port and the test prompts on the screen before testing.

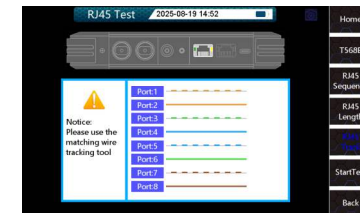
Rj45 sequence test need connect a RJ45 remote module and RJ45 track need a optional tracking tool.



RJ45 Sequence



RJ45 length



RJ45 Track

7.Setup

